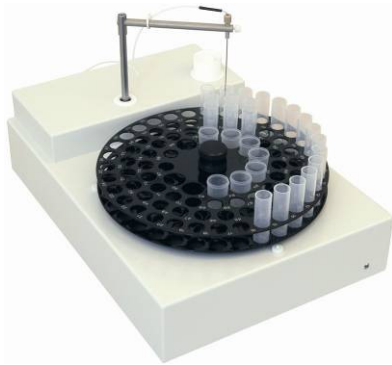


OEM-Autosampler

more effective use of the analytical laboratory by automating the sample preparation



The PS 61 can be built according to various requirements. There are possibilities to integrate washing and mixing positions, to stir the samples at the sampling position and to blow out the sample using a second needle. Besides it can be combined with a piston-driven dispenser pump or with a peristaltic pump. In this way sample preparation steps like dilution or fortification can be realised.

The sampler is controlled by an internal single-board computer, all axis are driven by stepper motors, the base positions are recognized by optical couplers.

The PS 61 is a stand-alone unit with integrated control and internal power connecting module. The PS 61 has no switches or keys to control its function as it is operated by the respective analyzer or by PC. Apart from that there is the possibility to integrate several single commands into a complex command (Y command) to arrange continuous procedures for the PS 61.

Two independent interfaces are available for pulse mode operation. The respective succession of movements (internally stored and freely programmable) is started by a pulse given to one of the interfaces. It is also possible to start the pulse by using of one or two mounted switches.

Different functions are integrable in the autosamplers:

- Wash position - membrane pump for liquid transportation into the washing port (overflow)
- rinsing liquid will flow by gravity
- Mixing position - (in combination with a diluter)
dispense or dilution of samples
- Sample arm - use of more than one canula is possible (typically 2)
- grab mechanism on the sampler arm
- use of Mini-Electrodes
- use of vial with septum is possible
- Interface - standard Interface RS 232 or USB
- internal second serial Interface (f.e. for connecting diluter)
- Options - Integration of a peristaltic pump
- Integration of switching valves (on/off), injection valve
- Start switch, Stop switch, Reset switch



The tray configuration (number of positions, volumes of the vials) is free practicable. (standard: 89 x 8/4/2 ml, 53 x 16 ml, 36 x 30 ml, 18 x 50 ml), external positions (f.e. standards, control samples) are also practicable. Two different kinds of trays are recognized automatically.

We design the samplers for customer requirements, also the housing and its colour.